

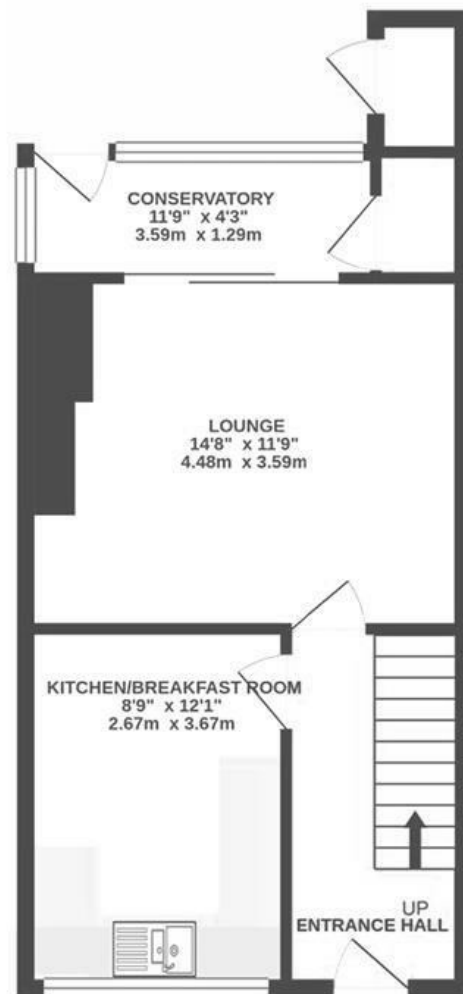
Parkside Gardens

EASTVILLE

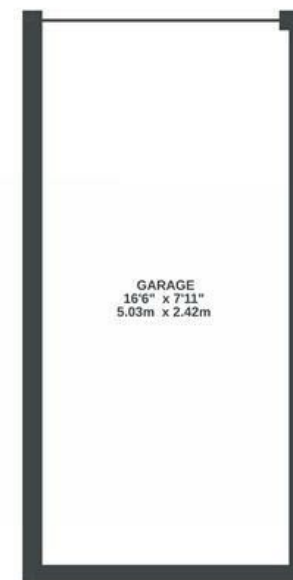
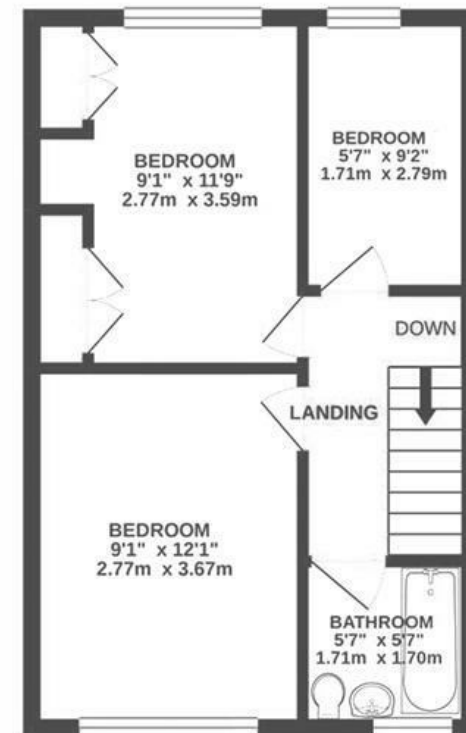
APPROXIMATE FLOOR AREA
70.9 SQM / 764 SQFT



GROUND FLOOR



1ST FLOOR



Boardwalk

Parkside

, BRISTOL



£335,000



3 Bedrooms



BS5 6UA



1 Bathrooms

"I've been incredibly lucky with my neighbours and this street – it's a truly special little community. As this was my first home, their kindness meant the world to me, whether it was lending tools, feeding my cat while I was away, or simply offering advice. It's the kind of place where people genuinely look out for one another, and that's made it feel like home from the very beginning."

